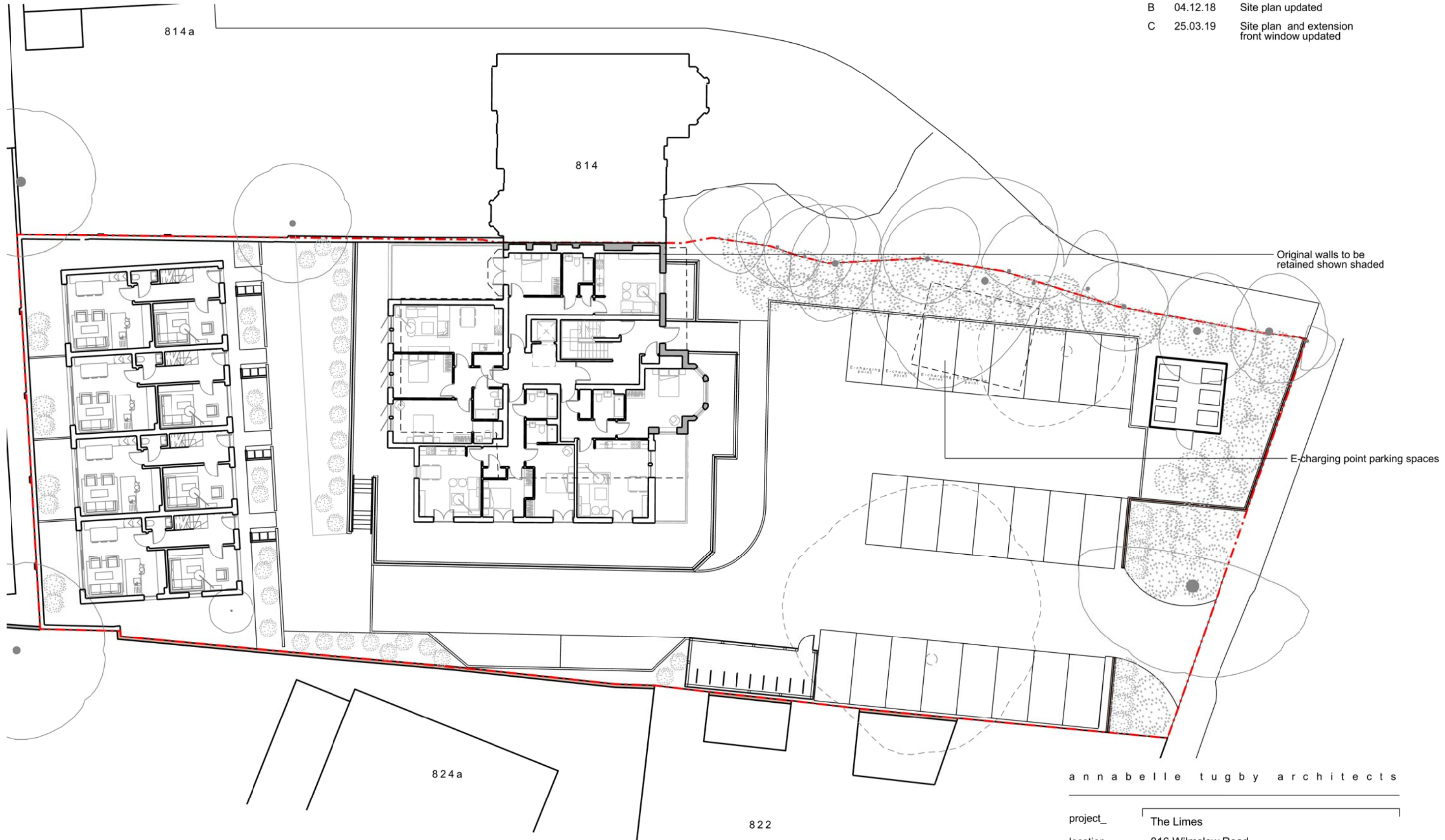


rev_	date_	comment_
A	23.07.18	Shrub removed adjacent to car parking space no. 19
B	04.12.18	Site plan updated
C	25.03.19	Site plan and extension front window updated



annabelle tugby architects

project_	The Limes
location_	816 Wilmslow Road Didsbury Manchester M20 2RN

dwg title_	PROPOSED SITE PLAN // GF PLANS
dwg no._	223_al(05)001
revision_	C
scale_	1:250 @a3
status_	PLANNING